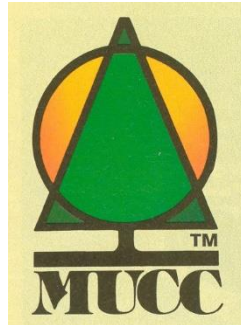


Emergency Procedures

- Range Officer should take charge of the situation.
- Render aid
- Call **911**
 - Describe emergency
 - Provide location: **8640 Moon Road, Saline**
 - Provide call back number: **429-9561**
- Direct Emergency Crews to the scene
- Take notes



Tri-County Affiliations



MCRGO ——— Largest State-based Firearms Advocate in America ———

**TRI-COUNTY
SPORTSMEN'S
LEAGUE**



Member M.U.C.C.

**RIFLE, PISTOL, TRAP AND
ARCHERY RANGE
RULES BOOKLET**

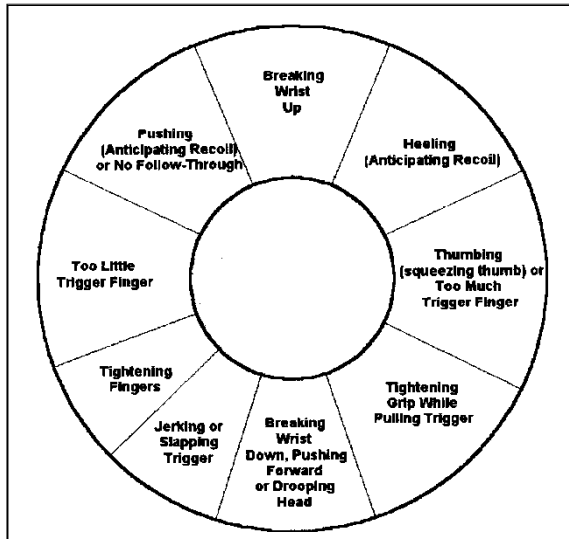
8640 Moon Road Saline, Michigan 48176 (734) 429-9561

Website: WWW.TCSL.ORG

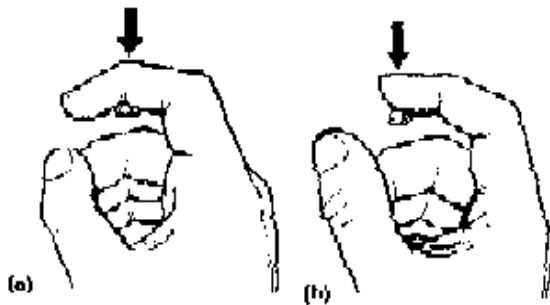
Revised 1/2015

Shooters Tips

Correction Target

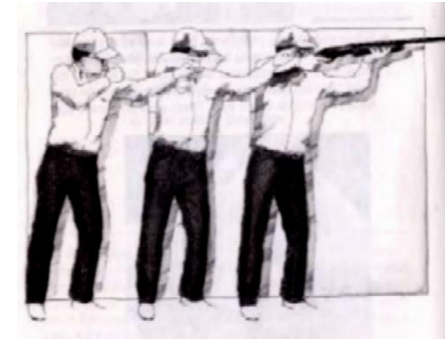


Trigger Finger



Correct Placement of the Index Finger on the Trigger. (a) With Joint of Index Finger. (b) With First Bone Section of Index Finger.

Shooters Tips



Shotgun Stance



Prone Position



Standing Position



Kneeling Position



Sitting Position

Tri-County Archery Range Rules

- Use common sense. Avoid situations for which a rule could not be written. Club Rules also apply to Archery Range where appropriate (example: Age requirements, no horseplay, etc.).
- All shooters must sign in and pay the Range fee.
- Proper equipment and equipment maintenance is the responsibility of the archer.
- No arrow shall be nocked while anyone is down range.
- No arrow shall be nocked while bow is pointed in any direction other than down range.
- Only nock arrows when on the Shooting line in the shooting position.
- Be courteous to fellow archers. Do not distract them while shooting.
- No shooting after consuming alcoholic beverages.
- No bow is to be pointed above the target while drawn. Draw from a lowered position and raise your bow to the target.
- No one is to go down range for any reason until the verbal "Line is clear" command is given.
- Always hang your bow from the hook at the front of the shooting line to caution the following shooters when retrieving or looking for a lost arrow.
- Use only target or field points when shooting. No broad heads except on designated broad head targets.
- Special rules may apply during 3D shoots or Special events.
- Report any problems to the Club Manager or a Range Officer

CLUB RULES

Apply to all Ranges

- Everyone must sign in and pay range fees before using ranges. The fees for the rifle and the pistol and archery ranges are different fees. Member and guests must both pay. **Exception:** Children under 12 and Junior Members are free.
- Members must display their membership card.
- Non-members must be accompanied by members. Each member is allowed three guests.
- Shooting hours are 10:00 a.m. until dusk Monday - Saturday. Sunday will be 12:00 p.m. to dusk.
- Smoking is discouraged on the firing line.
- No fully automatic firearms are allowed on the ranges. The 50 BMG is prohibited from being fired on TCSL Ranges.
- Never speak to anyone on the firing line while they are shooting or handling a firearm except for range commands.
- There will be no "horseplay" on any range at anytime.
- An adult member must accompany any person under 18 years old .
- Drawing from a Holster and Concealed Carry rules are outlined on the next page
- Members are **responsible** for the behavior of their guests. Violation of any range rule, or destruction of club property by a member or their guest, may result in termination of membership. Report violations to the Club Manager, TCSL Board Member, Range Officer, or a Range Chairman.
- No shooting of any wildlife on Tri-County property or ranges.

Routine for Entering Range:

- With unloaded gun and ammunition in bag/case, enter range and set bag on bench at firing line.
- Take out gun and lay down with muzzle facing down range.
- Place ammunition next to gun and place bag behind the shooter on the table. This allows all shooters a view of the firing line bench to see that all guns have their actions open.
- To put the gun away, bring bag/case back over to firing line bench and put unloaded gun and ammunition into the bag. This keeps the guns facing downrange at all times.

Routine for Concealed and Open Carry Pistols

- Open Carry is ONLY permitted on the Pistol Ranges, north of the creek.
- Your gun must remain holstered at all times until facing downrange standing at the firing line.
- Remove the gun from holster, unload, and place on the firing line bench while facing downrange.
- Gun must not be re-holstered until the time you are ready to leave the range. The gun is then loaded, re-holstered and concealed again at that point.
- There is NO drawing from the holster to fire on any range EXCEPT during: NRA PPOH courses, IDPA sanctioned events, or when under direct one-on-one TCSL or IDPA approved supervision on the Pistol Range
- Your holster is treated as a bag/case for the gun when moving between the pistol house and/or between action range bays on the Pistol Range (north of the creek). Your firearm must be either concealed or in a carry case or bag anywhere else on club grounds.
- This routine is followed so that shooters are not un-holstering or unloading guns anywhere but on the firing line facing downrange.

Patterning Board:

- A patterning board is available to determine the point of impact of your shotgun and the pellet density and distribution of your shotgun's pattern. Paper and staple guns are available at the Trap Range during normal hours of operation.
- Only Target loads (see Ammunition) may be used on the patterning board. Large shot size, steel/hevi-shot, magnum loads, slugs, and 3 or 3½ inch shells are not allowed.
- The maximum distance for patterning is 35 yards.

Safety:

- Hearing and Eye protection is required to shoot on the Trap Range.
- The action of all firearms must be open (See "Shotgun Rack for exceptions) and chambers and magazines empty of any shells, live or fired, at all times unless on the firing line.
- When walking to and from the firing line or changing stations, firearm should always be pointed down at the ground.
- Shotgun Racks are provided for your convenience to store your shotgun when not shooting. Semi-Auto and Pump action shotguns must have their actions open while on the racks. Break-open shotguns (double barrel, over and under, and single-shot) may be closed while on the racks, however, chambers must be empty.
- Firearms should always be pointed either down range or down at the ground when on the firing line.
- Shotguns may be loaded only on the firing line. Only one shell is allowed in the shotgun at a time unless shooting doubles then two shells are allowed. (Live shell(s) may be loaded in the chamber between shots however the actions must remain open until it is the shooter's turn to shoot).

Tri-County Trap Range Rules and Operation

Everyone must sign in as they enter the Trap Range

Hours of Operation: In general, the Trap Range is open for your shooting enjoyment according to the following schedule unless otherwise posted outside the door of the Trap Range Building.

Year round: Sunday: Noon to end of shooting (generally around 3:30)

- June through October: Wednesday, 4:00 pm to dusk
- Closures: The Trap Range is generally closed on Holiday weekends. Check at the Range on open days for changes to posted Holiday schedule.
- Other Hours: Shooting at the Trap Range with a portable target thrower or hand-thrower is not allowed.

Firearms:

- Only shotguns of 12ga or smaller may be used on the Trap Range
- All firearms must be in good working order
- Owners should be familiar with the assembly and operation of their shotgun before visiting the Trap Range.

Ammunition: Target Loads Only

- 3 inch (except in .410) and 3½ inch shells are not allowed on the Trap Range.
- Shot size is limited to a maximum of 7½ or smaller (8, 9, etc.) with a maximum of 1¹/₈ ounce of shot.\
- Shot shell velocity is limited to 1250fps (feet per second) typical of a “3 dram” load. No high velocity hunting or Sporting Clay loads.

TRI-COUNTY RIFLE AND PISTOL RANGE SAFETY RULES

REMEMBER: TREAT EVERY GUN AS A LOADED GUN

1. Always Point the Muzzle in a Safe Direction

- a. It is not acceptable that any person be “swept” by the muzzle of any firearm.
- b. While on the firing line, every firearm should, at all times, be pointed down range.
- c. Shooters shall shoot only at targets directly in front of their stations.
- d. Do not point the firearm above eye level at any time. Firearms must be raised to the target- not lowered. (dropping rear of firearm on bench with barrel elevated is a violation of this rule)
- e. All shooting on the ranges must be done from the Range Houses, except for club sponsored events such as Turkey Shoots, and IDPA Matches.

2. Keep your finger Off the Trigger, Except When Shooting.

- a. It is the shooter’s responsibility to ensure that no unintentional discharges occur.

3. Keep the Action Open and the Firearm Unloaded, Except When Shooting.

- a. In general all firearms must be brought to the property unloaded, all loading must be done on the firing line, and all firearms must be unloaded before being moved from the line. *Exception:* Concealed Pistols routine detailed on previous page.

4. Know Your Firearm and Ammunition.

- a. It is the shooter’s responsibility to ensure that every firearm and its ammunition used on the range is maintained and used in a safe manner.

5. Carry Only One Caliber of Ammunition at a Time.

- a. It is the shooter's responsibility to ensure that only suitable ammunition is used in each firearm. The shooter may bring only one firearm and its ammunition to the firing line at a time.
- b. Only slugs may be used by shotguns on rifle ranges. (No shot loads).
- c. .22 caliber rim fire rifles are allowed on the pistol ranges. This does not include 22 Magnum. No other long guns are allowed north of the creek.

6. Be Sure of Your Target and What is Beyond.

- a. Every target must be of a height to ensure that all bullets fired at it will impact the backstop. **Aerial shots and ground skips will not be tolerated.**
- b. Use only paper or cardboard targets. Newbold brand targets 8" in diameter or smaller may also be used

7. Know Where Others Are At All Times.

- a. The firing line is maintained in one of two states: "hot" or "clear". When the firing line is "hot", shooters are free to fire and no one may go forward of the firing line. When the firing line is "clear", the **RED** light is flashing and shooters are free to move forward of the firing line to work on targets, and no one may handle any firearms or be at the firing line.
- b. It is the responsibility of every shooter to know the current state ("clear" or "hot") of the firing line at all times.
- c. It is the responsibility of every shooter to ensure that all others on the firing line are made aware when the firing line is declared "clear" or "hot".
- d. It is the responsibility of every shooter to ensure that the firing line is not declared "hot" until all others are behind the firing line.

- e. Never proceed to any location in front of the firing line until all shooters have properly benched their firearms with their actions open (Properly benched means muzzle downrange, action open and barrel horizontal) and anyone not going downrange must stay behind the yellow safe line.
- f. All persons shall remain behind the firing line/station until "the line is clear" command is given, and the "red lights" are turned on.

8. Wear Ear and Eye Protection.

- a. Shooters and observers must wear ear and eye protection whenever the range is "Hot".

9. Know and Obey All Range Commands

- a. It is the responsibility of all shooters to know and obey all Range commands immediately.
- b. All "cease fire" commands will be obeyed instantly and may be given by anyone on the range.
- c. Normally the state of the firing line is declared by voice commands: "the line is clear" and "the line is hot". In an emergency the firing line may be made cold by any effective means.

10. Don't Mix Alcohol and Drugs with Shooting

- a. Under no circumstances will alcohol or drugs be permitted on the firing line. Shooters may not consume alcohol until they have finished shooting for the day. Shooters must not, under any circumstances, go onto the firing lines or handle any firearm after consuming alcohol.
- b. Shooters should also be aware of the effects of fatigue on shooter performance. Members are responsible to ensure that they and their guests are in a safe condition whenever they come to the firing line.